

ADVANCING EMBRYOLOGY EDUCATION

3D Real-time Embryology is a state-of-the-art platform that accelerates learning a complex but vital subject. Using our fully-interactive 3D models, you can remove layers and inspect structures across every stage of embryo development.

Finally, you can deepen your understanding beyond 2D textbooks and embrace a better way to acquire knowledge.



www.tetondata.com
800-901-5494

**PRIMAL
PICTURES**
POWERING ANATOMY.TV



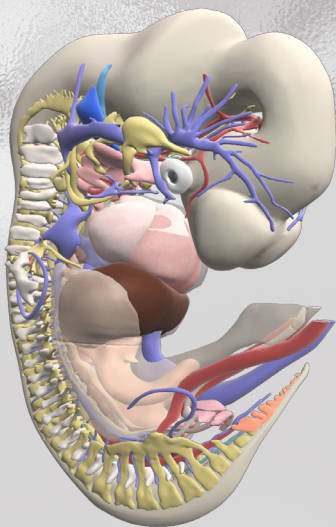
EDUCATE. ENGAGE. **INSPIRE.**

BRING LEARNING TO LIFE

Our in-house anatomy experts have partnered with education specialists at Amsterdam AMC to curate a library of pre-set views of key structures, systems, and germ layers that will help you understand every stage of embryo development.

With 14 interactive 3D models made from micro-CT images of real embryos, 3D Real-time Embryology is the industry's most detailed and accurate resource.

Visualize, compare, and contrast development over time, with interactive functionality and perspectives to truly build spatial concepts. And all models are embeddable into course materials for seamless teaching and learning.



**Answering the need for better
understanding of human anatomy**

**PRIMAL
PICTURES** 
POWERING ANATOMY.TV

See 3D Real-time
Embryology in
action in our
preview video:



**tds
health**
TETON DATA SYSTEMS

www.tetondata.com
800-901-5494

EDUCATE. ENGAGE. **INSPIRE.**