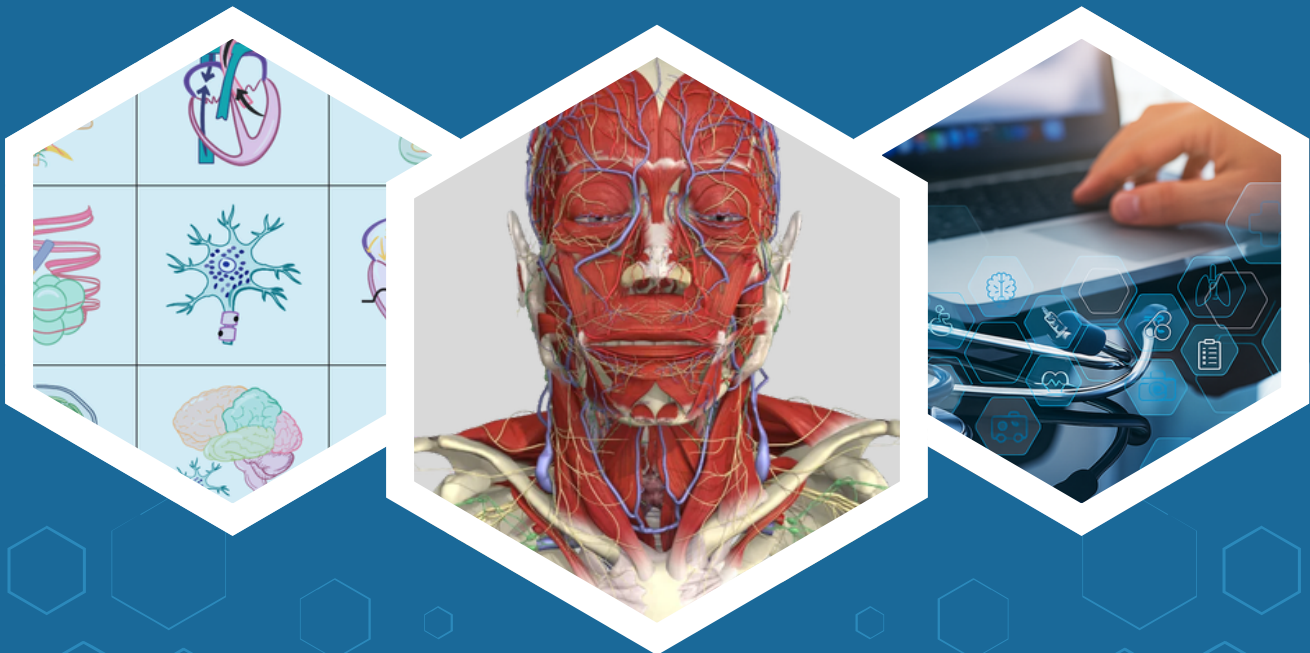




The TDS Health Difference

For more than three decades, TDS Health has delivered trusted reference and e-learning resources for healthcare practitioners, residents, and students. Through a network of 60+ partners, we provide authoritative content, interactive tools, and innovative solutions, all carefully vetted for quality and reliability. Our highly customizable subscriptions support diverse academic and clinical training needs, helping develop practice-ready professionals and supporting lifelong learning across every stage.



PRIMAL PICTURES



Anatomy.tv by Primal Pictures is a web-based platform with medically accurate 3D anatomy models built from real scan data. Designed for education and clinical use, users can explore structures in detail and access MRI and CT imaging, animations, videos, and explanatory content. Modules include Anatomy & Physiology, Embryology, Functional Anatomy, Imaging, and Disease & Conditions, plus quizzes and study tools to support learning and assessment.

STAT!Ref

STAT!Ref, the premier healthcare e-resource, provides evidence-based, authoritative point-of-care content with 500+ and growing titles across more than 50 healthcare disciplines. AI-assisted insights enhance search relevance and clinical research workflows, helping users find trusted information faster to support learning, teaching, and clinical decision-making.



BoardVitals delivers comprehensive question banks and practice exams for medical, nursing, and healthcare certification programs. Thousands of board-style questions include detailed explanations and performance analytics. Timed and untimed modes, adaptive learning features, and personalized recommendations help learners prepare efficiently and confidently.



EKGaction offers self-paced courses that build cardiovascular interpretation skills through real EKG tracings and case-based learning. From core concepts in EKG: Learn it well to real-time clinical challenges in the Advanced Course, the platform supports undergraduate medical education, residency training, advanced practice programs, and continuing education.



Protocol Builder is a cloud-based protocol writing technology that makes it faster and easier to develop investigator-initiated clinical research protocols that meet IRB and regulatory standards. With Protocol Builder, you can also enable collaboration among contributors, advance the ability to publish research, strengthen research programs and increase study pipelines and more.



Neural Consult transforms lectures and articles into a personalized learning journey with AI medical search, flashcards, board-style questions, and live patient simulation. Its AI builds a private database around uploaded materials, creating a trusted learning environment that grows richer over time. The platform supports competency-based learning while strengthening mastery and clinical reasoning.



StatPearls is an online resource providing evidence-based content for healthcare education and clinical reference, with 70,000+ peer-reviewed articles, 80,000+ clinical questions, and thousands of CE/CME activities. It supports lifelong learning, exam preparation, and point-of-care decision-making for students, educators, and clinicians.



DITKI (Draw it to Know it) is an interactive learning platform that helps students master complex medical and science concepts through active learning. Using drawing, recall, and repetition, DITKI promotes deeper engagement and long-term retention. Originally developed for neuroscience, the platform now spans anatomy, physiology, biology, and chemistry, making it a valuable complement to traditional coursework and exam preparation.



Pharmacology World offers a robust collection of teaching videos focused on core pharmacology concepts, created by renowned educator Dr. Michael Lee. With more than 12 hours of content across 50 focused videos, the platform helps learners strengthen understanding, improve retention, and reinforce key concepts.