

3D Functional Human Anatomy

Available on Anatomy.tv

Engage, Educate and Inspire.

Promote mastery of functional anatomy in any learning, teaching or practice environment – faster, easier and more efficiently than ever before.

Discover the human body as you've never seen it before, with dynamic movement animations and movies of the entire body from every angle, plus explanatory text to reinforce knowledge and understanding.

- 3D graphical model of the entire skeleton, with ligaments, muscles, and neurovascular structures
- 290 interactive 3D anatomy views with removable layers, interactive highlights and detailed explanatory text
- 3D anatomy and clinical content including animations, movies and interactive dissection slides, that can be easily embedded into lectures, lesson plans, presentations and patient hand-outs
- Extensive library of over 75 animations of many common movements such as flexion, extension, adduction and abduction at each joint.

For educators

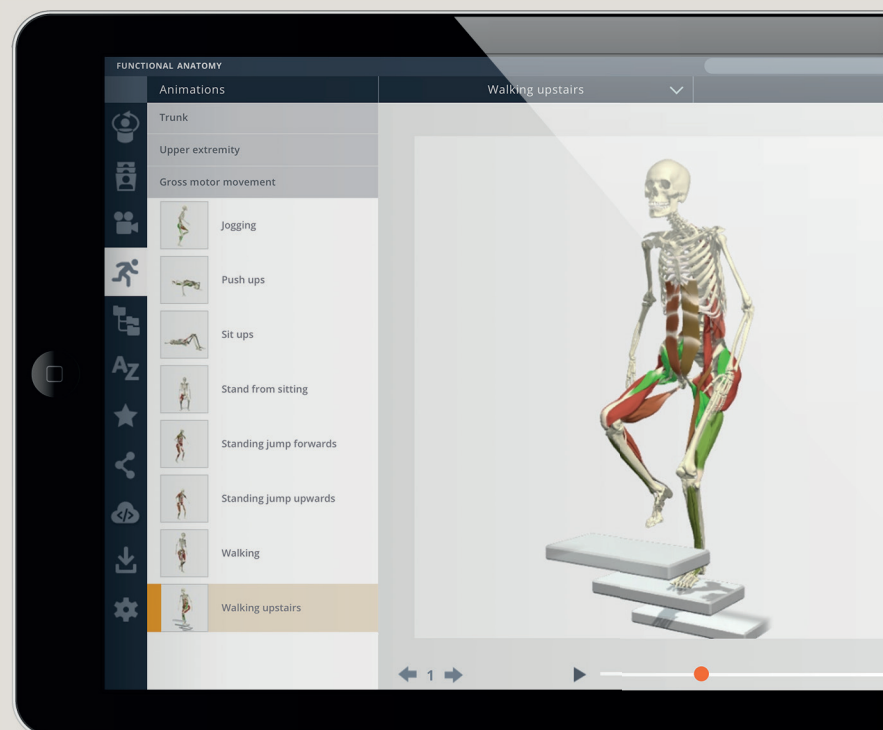
Primal is a convenient and intuitive resource that makes it easy to enliven course materials with thousands of images, animations and movies.

For students

A powerful and engaging reference tool and image library that brings every movement and function to life.

For practitioners

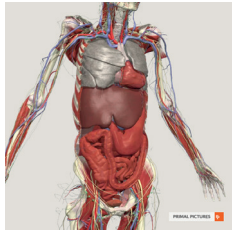
Primal's software is an effective patient education aid, a reference tool, and image library.



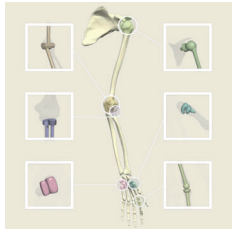
**Get in touch for
your free trial**

Email: theteam@tetondata.com | www.tetondata.com | www.anatomy.tv

Primal's 3D Functional Anatomy images

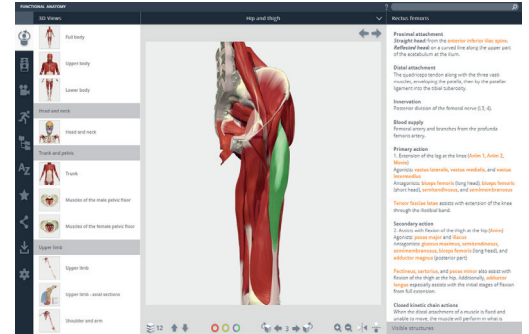


Taken from real-scan data our anatomy is an accurate representation of structures, depicting even the smallest of nuances. For example, our data set of CT imaging showed this particular individual have a U-shaped transverse colon. Rather than changing this, we embrace these unique qualities as we see this as another opportunity to teach about variation.



Primal's 3D Functional Anatomy has a comprehensive series of 3D models documenting joint type and how these are important in relation to the movement they perform.

Updates and Enhancements



Primal Pictures is constantly evolving to deliver a best-in-class service based on your needs.

New HMTL5 UI for Primal's 3D Functional Anatomy

Our latest version combines state-of-the-art technology with an easy-to-use and consistent interface, and powerful search capabilities that makes it simple to customise and interact with highly accurate 3D human anatomy and clinical content.

CONVENIENCE

3D Functional Anatomy uses the latest HTML5 technology for display of 3D graphics for fast, easy access across browsers, platforms and devices – for 24/7 access from anywhere.

ACCESSIBILITY

Take the Primal library with you on your desktop, laptop or tablet – whenever and wherever you need access – in the classroom, lab, library or office.

INTUITIVE USER EXPERIENCE

Redesigned with the user in mind, the modern interface extends across the Primal portfolio for a consistent user experience.

EASILY EMBED CONTENT INTO:

Lectures | Lesson plans | Presentations | Patient handouts | LMS and VLE

PEACE OF MIND

Trust in Primal's secure delivery that's always there when you need it – with no disruptions, security concerns, or management required.

RICHER CONTENT

Contextual, flexible content supports deeper learning outcomes in and out of the classroom and optimises digital study and research time.

MAXIMISE VALUE

Less training and support means users are up and running faster, benefiting from all of Primal's unrivalled content and saving your organization on overhead costs.

To learn how Primal's 3D Functional Human Anatomy saves time and expense, and enhances student and patient education, please contact us today.

theteam@tetondata.com | www.tetondata.com