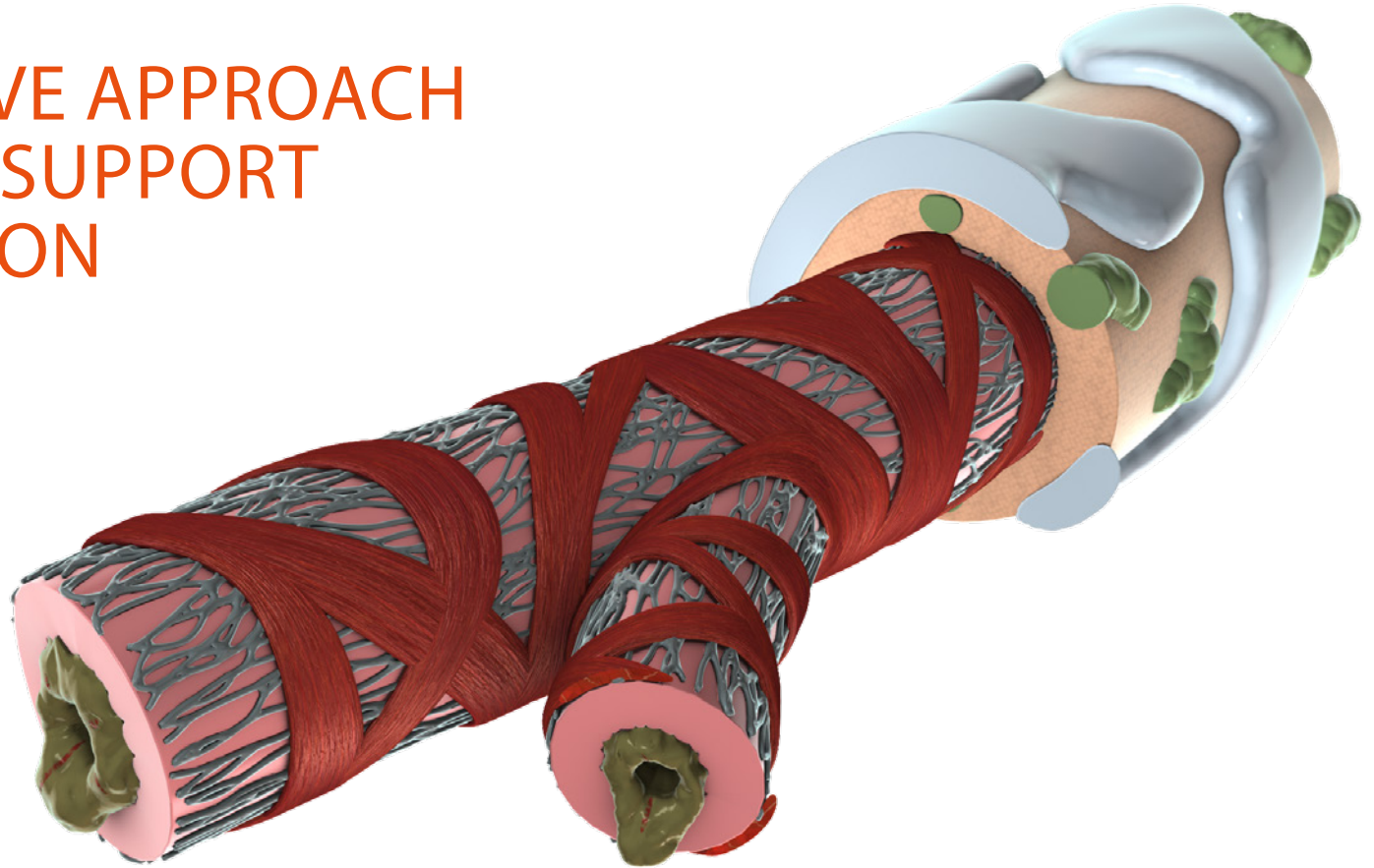


PRIMAL'S INNOVATIVE APPROACH TO FACILITATE AND SUPPORT ANATOMY EDUCATION

Best-in-class content,
partnership and service



Use this consistently updated snapshot of planned, in-development and behind-the-scenes enhancements to improve user experience and exceed expectations.

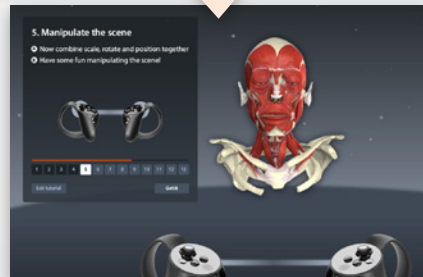
Primal Pictures Enhancement Roadmap

SNAPSHOT

Recent updates

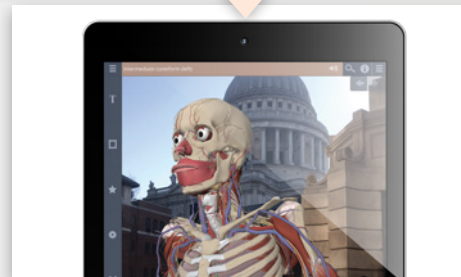
PRIMAL VR:

A fully immersive virtual reality environment allowing educators to elevate the teaching of anatomy far above any textbook.



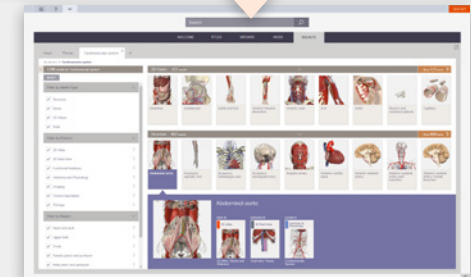
AUGMENTED REALITY:

Explore Primal's anatomy in real-world environments, with 3D Real-time's new AR feature – a stunning new way to interact with and learn about human anatomy.



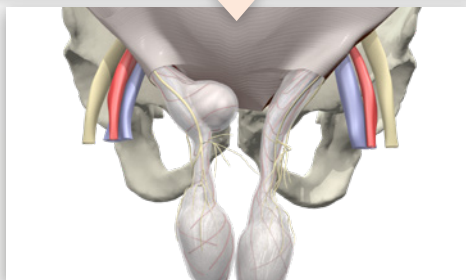
SMART SEARCH:

Anatomy.tv's breakthrough Smart Search feature has an intuitive modern interface enabling rich anatomy content discovery with minimal user training and support.



DISEASE & CONDITIONS – BETA LAUNCH

The beta of our new Disease & Conditions module launched, delivering a selection of the World's highest quality pathology content to our subscribers.



EMBEDDABLE VIEWER:

Embed dynamic 3D content into your LMS and proprietary training environment enabling interactivity with the ability to rotate, layer, highlight, and display labels.



HELP OPTIMISATION:

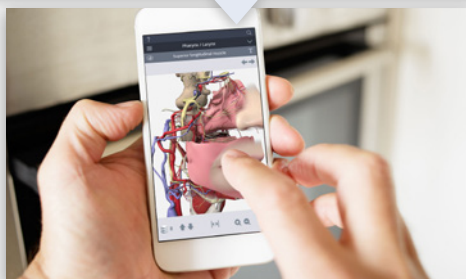
Primal is optimising the way users can get the support they need, and is bringing a suite of new tools, including quick start videos and guides, into the front-end of Anatomy.tv.



Upcoming 2020 releases

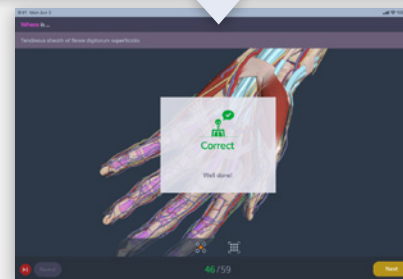
MOBILE OPTIMISATION:

Fully optimized smartphone experience enabling usage on the go, on any device.



ASSESSMENT TOOLS (ATV AND MOBILE):

Accurate anatomical content utilized in a variety of flexible ways to provide tools to enhance anatomical assessment and improve student outcomes.



DISEASE & CONDITIONS – FULL RELEASE:

The full release of Disease & Conditions will bring with it an updated interface and a whole selection of new conditions which we've created based on feedback from our subscribers.

