

Picmonic App Instruction Manual for D2L Brightspace

Faculty: Creating Assignments with Picmonic Content	1
OPTION 1) Preferred - as an assignment	1
Templates for the Lesson Details: (modify as you see fit)	3
For a Picmonic Quiz:	4
OPTION 2) As an Activity in a Module	4
Free vs Premium Access	5
Faculty	5
Students	5
Accessibility	7
Security	7
Contact Us	8
Installing the Picmonic App in D2L	8
Step 1: Register the Domain	8
Step 2: Add Picmonic's Remote Plugin	11

To Install the Picmonic App in D2L for the first time, please [CLICK HERE](#).

If you use a different LMS, instructions are here:

- [Picmonic App Instruction Manual for Canvas LMS](#)
- [Picmonic App Instruction Manual for Blackboard LMS](#)
- [Picmonic App Instruction Manual for Moodle LMS](#)

Faculty: Creating Assignments with Picmonic Content

There are two ways to insert Picmonic content, either as an Assignment or an Activity in a Module:

OPTION 1) Preferred - as an assignment

First, create a new assignment, then follow the instructions below to add Picmonic content:

1. Name the assignment (or do this after selecting the Picmonic content)
2. In Instructions box, click the LINK icon in the top left to Insert QuickLink

Content Discussions Classlist Assignments Grades Quizzes Surveys Library Brainfuse Tutoring More

New Assignment

Properties Restrictions Objectives Turnitin®

Name*

Instructions

graph B I U Font Family Font Size

Attachments

Add Attachment Record Audio Record Video

Submission, Completion and Categorization

Assignment Type

Individual assignment

Group assignment

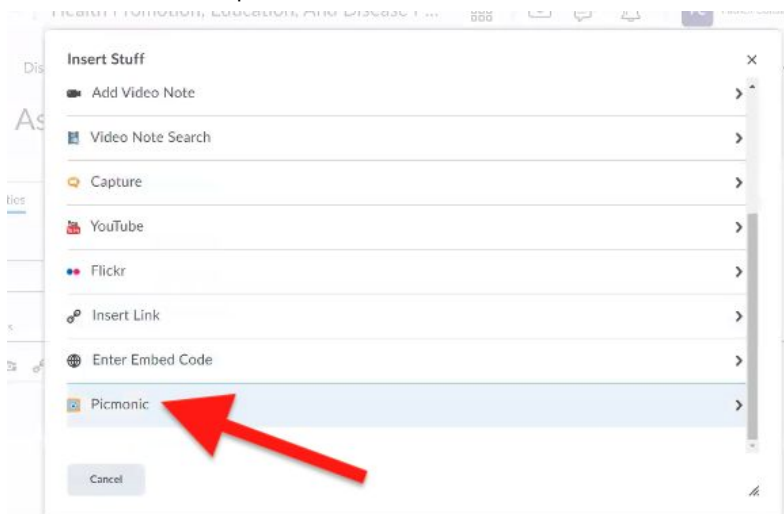
Group Category -- No Group Categories Exist --

Submission type

File submission

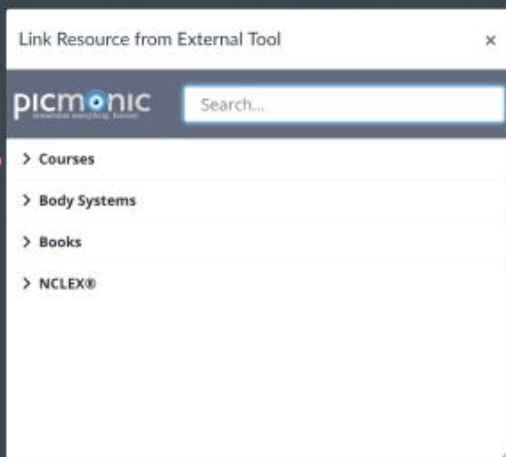
Save and Close Save and New Save Cancel

3. Select Picmonic from the dropdown menu



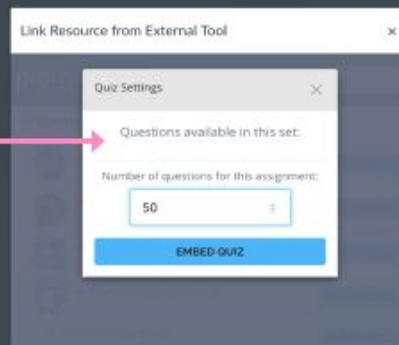
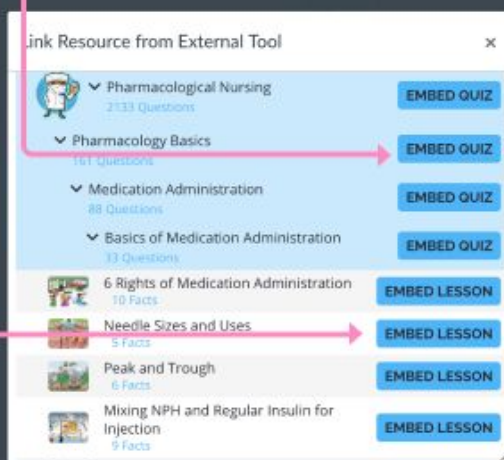
4. Navigate through the library of 1,000+ Picmonics video-quiz lessons, or embed a quiz on a set of content

5) Search or Browse through the Picmonic library to the content you want to include in the lesson



6) Select either:

- a) an individual Picmonic lesson (1 Video + Quiz)
- b) a set of content as a Quiz, then select the # of questions



7. Add instructions from the templates below
8. SAVE.

Templates for the Lesson Details: (modify as you see fit)

For an individual Picmonic (versus an entire content set or course):

Assignment Name: Picmonic Lesson: _____

Assignment Details:

This assignment is one short Picmonic Video and Quiz.

Watch the Educational and Story audio tracks, then take the Quiz. During the quiz, you can replay the video if necessary.

You may redo this assignment as many times as you want before the due date, but only your most recent quiz score will count towards your grade.

For a Picmonic Quiz:

Assignment Name: Picmonic Quiz: _____

Assignment Details:

This assignment is a Picmonic Quiz of up to **20** questions.

You have unlimited time to take this quiz and can retake it as many times as you want before the due date, but only your most recent score will count towards your grade.

If you get a question wrong, play the short video to help you better remember the concept.

OPTION 2) As an Activity in a Module

1. Click **Content** then navigate to a module
2. Click Existing Activities in the middle of the screen

The screenshot displays a course management system interface. At the top, a navigation bar includes 'Content', 'Discussions', 'Classlist', 'Assignments', 'Grades', 'Quizzes', 'Surveys', 'Library', 'Brainfuse Tutoring', and 'More'. Below this is a search bar labeled 'Search Topics'. The main content area is titled 'Instructor Only Resource' and features a 'Print' icon and a 'Settings' gear icon. A red arrow points from the 'Content' tab to the 'Existing Activities' dropdown menu. The dropdown menu is open, showing options: 'Upload / Create', 'Existing Activities', and 'Bulk Edit'. Below the dropdown, a list of activities is visible, including 'Course Syllabus', 'YouSeeU Faculty Instructions', and 'Early Alert Process & Form'. The 'Early Alert Process & Form' activity is expanded, showing a description and a list of at-risk behaviors: 'No logging in to class/not participating', 'Not submitting work on time', and 'Submitting work that is of very low quality'.

3. Select Picmonic from the dropdown, and the rest is the same as the above within an assignment.

Free vs Premium Access

Faculty

As a show of appreciation for all you do, faculty members receive 100% FREE Picmonic Premium accounts!

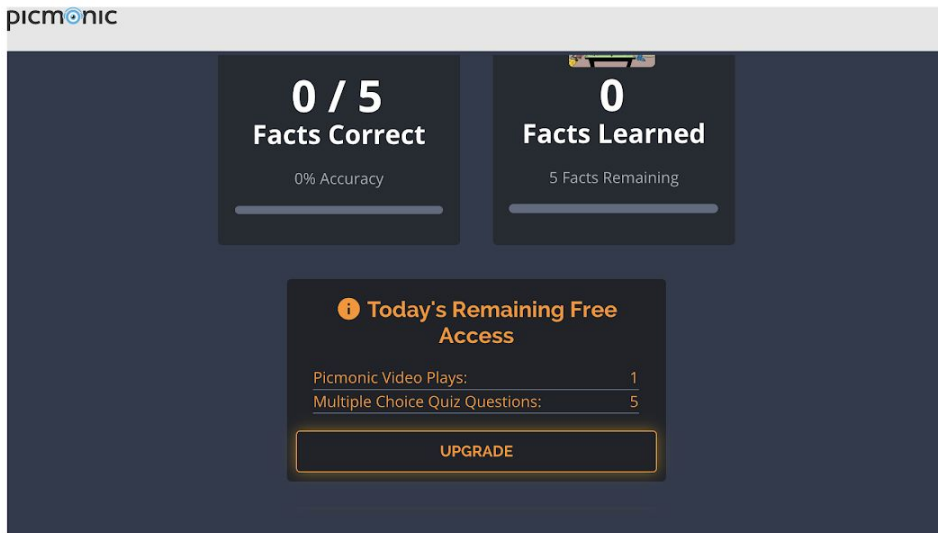
To get your free premium access, please go to picmonic.com/educators and click Join for Free in the top right to begin the registration process. After the form for name, email, and password, you'll be asked to input a URL to your faculty webpage or LinkedIn so that we can verify your faculty status, please be sure to include the "http://" in the URL. You will immediately have temporary access and your account should be fully updated within a few days.

Students

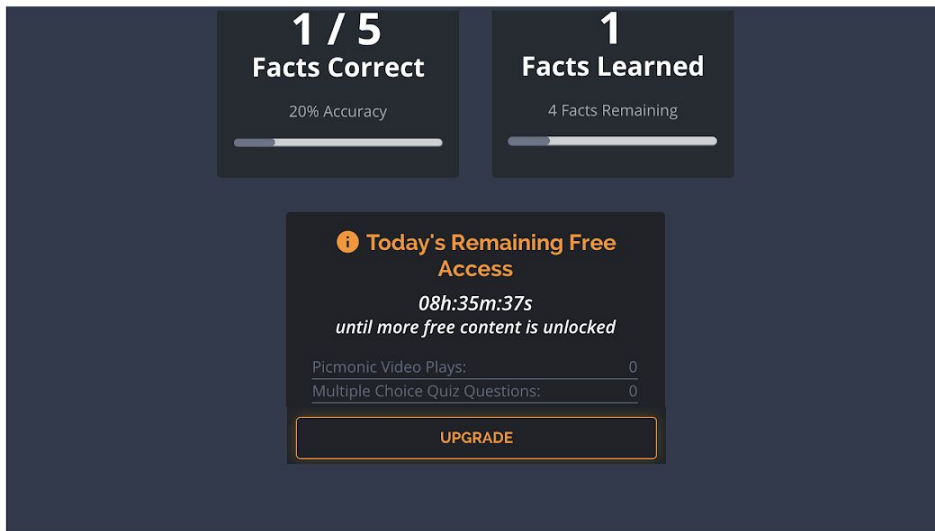
With a Picmonic Free account students get daily access to 1 Picmonic and 20 Quiz questions. 100% free, every day, forever! They also get access to 1 round of the Daily Quiz with Spaced Repetition, but this feature is only available on Picmonic.com or Picmonic mobile apps.

For unlimited access to all content and features Picmonic has to offer, students can upgrade to Picmonic Premium for an affordable price that varies by type of program: picmonic.com/pricing

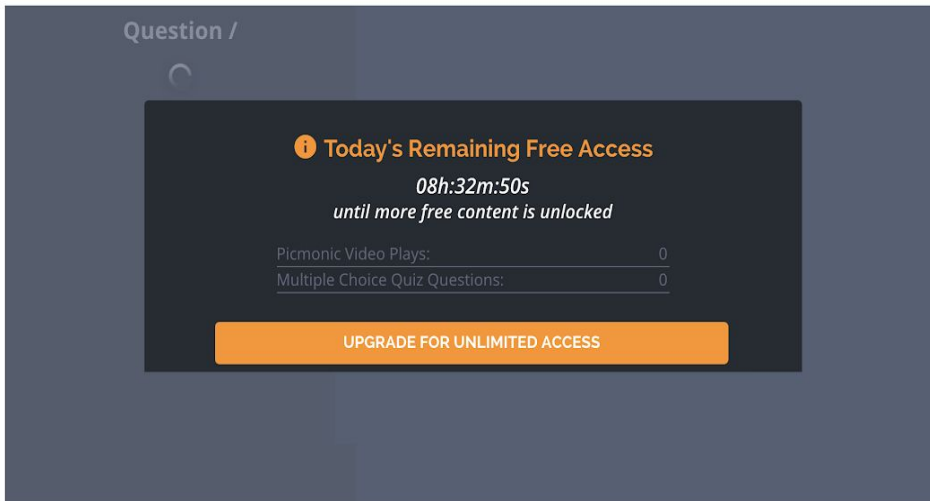
The Quiz Complete screen showing a student's remaining free access for the day:



The Quiz Complete screen once a student has just used up their free access for the day:



When out of free access for the day and attempting to launch a Picmonic Lesson:



Accessibility

Picmonic meets general ADA standards and is designed to be accessible for all learners, including those with disabilities. Picmonic has created a culture that considers those with differing learning and access needs from the outset. The Picmonic platform was built using the most modern HTML and CSS technologies and is committed to WCAG 2.0 (A/AA/AAA), SECTION 508 and similar accessibility standards and requirements. The Picmonic interface leverages rem sizing for fonts enabling users to zoom on their browser window. You can enlarge the screen by clicking "Command" and "+" (on Mac) or "Ctrl" and "+" (on PC). If you have additional circumstances to address, please contact us at support@picmonic.com and we will be happy to provide the best available solutions.

Security

To ensure the privacy and security of your data, Picmonic uses HTTPS for all communication and encrypts all inbound and outbound traffic using 128-bit TLS/SSL. All Picmonic user data is stored in highly stable, secure data servers at Amazon Web Services (AWS). Picmonic data is backed up redundantly (every day). In case of emergency or disaster, data is recovered from AWS distributed location server backups. The Picmonic LTI API uses the industry-standard OAuth2 protocol, which provides secure access to Picmonic data while preventing direct access to Picmonic databases. Personal information is never shared with or sold to third parties (see [Picmonic Privacy Policy](#)).

Contact Us

If you have additional questions, please don't hesitate to contact us at educators@picmonic.com.

If you have feedback or suggestions on how we can improve this instruction manual or the Picmonic D2L app, please let us know!

Thank you and good luck!

Installing the Picmonic App in D2L

The Picmonic App in D2L should be installed by an LMS Administrator as a Remote Plugin enabled for the appropriate courses or departments.

*If you requested the app to be configured for **multiple program types** (ie Nursing RN, Nurse Practitioner, Paramedic) then you will receive unique Consumer Key and Secrets for each program and the Picmonic App should be installed separately into each program in the LMS by installing the plugin and applying it to each program independently.*

Step 1: Register the Domain

Register Picmonic as an app in D2L and send the Application ID & Key back to me, screenshots of the process are below.

You will use:

- Application Name: Picmonic
- Trusted URL: <https://www.picmonic.com/login/lti/d2l>
- Enable Application: check this box

Organization Related	Shared Files	IPSIS Administration
Broken Links	Standards	IPSIS Section Association
Competency Service Jobs	System Log	Security
Config Variable Browser	Video Note Captions	Password Policy
Customization Config	Course Related	Roles and Permissions
External Learning Tools	Attendance Schemes	Trusted Sites
External Links	Class Progress and User Progress	Product/Tool Administration
Final Grade Audit Log	Classlist Tab Management	Bulk Tool Configuration
Form Elements	Competencies	View Product Versions
Global Announcements	Course Content Feedback	D2L Administration
Google Apps Administration	Course Management	Health Checks
Homepage Management	Grade Schemes	
Import/Export/Copy Components	Rubrics	
IMS Configuration	View Copy Course History	
Language Management	ePortfolio	
Locale Management	Forms	
Login Page Management	Sharing Groups	
Mail Template Management	Tag Management	
Manage Extensibility	Themes	

This list contains Valence API applications registered by your institution and universal applications offered by D

Register an App

✓ Enable

✗ Disable

All

Enabled

Disabled

81 items shown

✓ [Desire2Learn ePortfolio v1.0](#)
Desire2Learn Inc.

✓ [Profile Picture v1.0](#)
Desire2Learn Incorporated

✓ [Enterprise Roles Plug-in v1.0](#)
D2L Inc.

✓ [Desire2Learn Binder v1.0](#)
Desire2Learn Inc.

✓ [MyDesire2Learn v1.0](#)

Register an Application

Application Name *

Picmonic

Trusted URL *

<https://www.picmonic.com/login/lti/d2l>

This is where we will send credentials when the application asks for them. No other destination will be allowed.

Major Version * Minor Version *

1

0

Description



Enable this application



I accept the [Non-Commercial Developer Agreement](#)

Register Application

Cancel

Send the Application ID & Key via email to educators@picmonic.com or reply to the email with the instructions.

Step 2: Add Picmonic's Remote Plugin

Admin Tools > Remote Plugins > **Add Plugin**

1. Plugin Type: Quicklink
2. Name: Picmonic
3. Launch Point URL: <https://www.picmonic.com/login/lti/select>
4. LTI Key & LTI Secret: These are provided via email by Picmonic. If you have not received these, please fill out this form <https://picmonic.typeform.com/to/FUg1Yd> or contact educators@picmonic.com
5. OAuth Signature Method: HMAC-SHA1
6. Icon URL: https://cdn.picmonic.com/cloud_data/pr/assets/img/home/icon-16x16.png
7. Test URL: Leave this blank
8. Make available to: Choose all applicable organizations
9. **SAVE**

10. Reply to the email and let everyone know that it's ready to go

You can test the integration using the below steps, but it will not work properly until Picmonic has input your unique Application ID & Key into their database.

If you are setting this up by request of a faculty member, please reply-all to the email from them and let them know the app is installed and ready to use.

If you have additional questions, please don't hesitate to contact us at educators@picmonic.com.

If you have feedback or suggestions on how we can improve this instruction manual or the Picmonic D2L app, please let us know!

Thank you and good luck!

The Picmonic Team